




# TATA Swach<sup>®</sup>

NANOTECH WATER PURIFIER™  
VAADA SWACH PAANI KA, VISHWAS TATA KA.

-  No need to boil
-  No electricity required
-  No running water required



**Marketed By:**  
TATA CHEMICALS LIMITED,  
Bombay House, 24 Homi Mody Street,  
Fort, Mumbai 400001 (Maharashtra)

**Manufactured By; Assembled By and Packed By:**  
TATACHEMICALS LIMITED,  
Bombay House, 24 Homi Mody Street, Fort,  
Mumbai 400 001 (Maharashtra)  
at PO Durgachak, Haldia District Purba Medinipur,  
West Bengal 721 602

**For suggestions and feedback,  
contact: Consumer Care Cell:**  
TATA Swach<sup>®</sup> Customer Care Manager,  
TATA CHEMICALS LIMITED,  
Leela Business Park, Andheri-Kurla Road,  
Andheri East, Mumbai 400059

The Tata Swach<sup>®</sup> Help Book

## Contents

1. Welcome Note .....	2
2. Important Instructions .....	3
3. Knowing Your <b>TATA Swach</b> <sup>®</sup> Nanotech Water Purifier™ .....	4
4. How To Assemble <b>TATA Swach</b> <sup>®</sup> Nanotech Water Purifier™ .....	5
5. Post Assembly - Before Regular Use .....	10
6. Cleaning Instructions For <b>TATA Swach</b> <sup>®</sup> Nanotech Water Purifier™ .....	11
7. Replacing <b>TATA Swach</b> <sup>®</sup> <b>Bulb</b> ™.....	12
8. Most Often Asked Questions .....	14
9. <b>TATA Swach</b> <sup>®</sup> Nanotech Water Purifier™ Warranty Policy .....	16

## VAADA SWACH PAANI KA, VISHWAS TATA KA.

Dear Customer,

Thank you for placing confidence in **TATA Swach**<sup>®</sup> Nanotech Water Purifier™ as the protector of your family's health! We can reassure you that with **TATA Swach**<sup>®</sup> Nanotech Water Purifier™, you have indeed made the right choice for your family's health and wellbeing.

The revolutionary **TATA Swach**<sup>®</sup> Nanotech Water Purifier™ ensures that your family is protected from water borne diseases like Diarrhoea, Cholera, Typhoid and Dysentery.

This manual will help you in using your **TATA Swach**<sup>®</sup> Nanotech Water Purifier™ in the most effective manner. We request you to please go through the instructions in the manual carefully before beginning to assemble & use the **TATA Swach**<sup>®</sup> Nanotech Water Purifier™.

If you have any problems, have queries or suggestions, our customer care associates on the **TATA Swach**<sup>®</sup> Toll Free Helpline will be happy to assist you. (Lines open all days from 10 am to 8 pm). It is always a pleasure to hear from you.

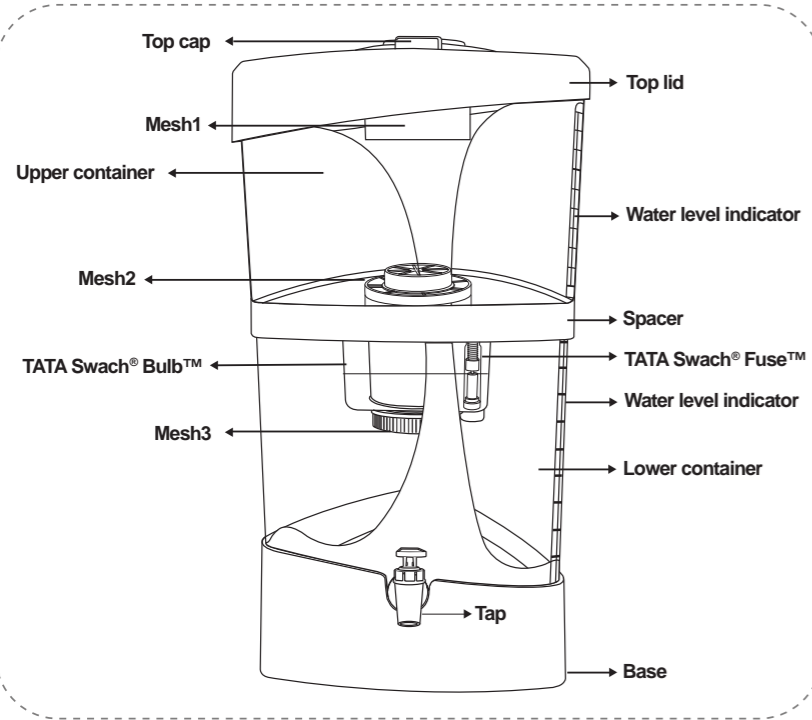


**TATA**  
**Swach**<sup>®</sup>  
NANOTECH WATER PURIFIER™  
VAADA SWACH PAANI KA, VISHWAS TATA KA.

## Important Instructions

- 1) Avoid exposure to direct sunlight as it may damage the **TATA Swach**<sup>®</sup> Nanotech Water Purifier's™ plastic body.
- 2) Always keep the **TATA Swach**<sup>®</sup> Nanotech Water Purifier™ in a clean, dust-free environment.
- 3) Keep both the storage containers clean. You should wash them at least once in a week with water.
- 4) **Mesh1** and **Mesh2** should be washed at least once a week or as frequently as required.
- 5) **Mesh3** (below the **TATA Swach**<sup>®</sup> **Bulb**™) should be washed at least once a month or as frequently as required.
- 6) Do not use sharp objects like forks, spoons, knives, etc to clean any component of your **TATA Swach**<sup>®</sup> Nanotech Water Purifier™.
- 7) Handle your **TATA Swach**<sup>®</sup> Nanotech Water Purifier™ with care and ensure that you do not drop any part from a height.

## Knowing your TATA Swach® Nanotech Water Purifier™



## Knowing your TATA Swach® Nanotech Water Purifier™

Your TATA Swach® Nanotech Water Purifier™ comprises:

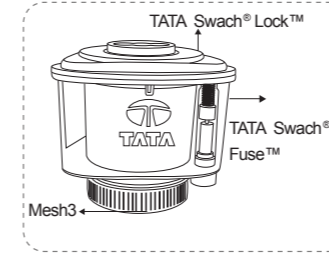
### A) Storage Containers:

- Upper container- up to 9 litres capacity
- Lower container- up to 9 litres capacity

### B) Purification System:

- **Mesh1** and **Mesh2**: Micro-mesh systems that remove the minutest visible impurities and make water clean & clear.
- **TATA Swach® Bulb™**

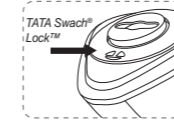
### TATA Swach® Bulb™:



At the heart of the TATA Swach® Nanotech Water Purifier™ lies the TATA Swach® Bulb™ which has a purification capacity upto 3000 litres. It contains a unique internationally tested **TSRF™ Technology** that uses nanotechnology to kill harmful organisms. Further, it also intelligently controls the purification process with in-built features like :

- TATA Swach® Fuse™
- TATA Swach® Lock™
- Mesh3

### a) TATA Swach® Lock™:



Every TATA Swach® Bulb™ comes with a unique TATA Swach® Lock™. The TATA Swach® Lock™ is the mark of originality that ensures the genuineness of the TATA Swach® Bulb™ every time you recharge your TATA Swach® Nanotech Water Purifier™.

## b) TATA Swach Fuse™



New **TATA Swach® Bulb™**, the red indicator showing full power

The in-built **TATA Swach® Fuse™** in your **TATA Swach® Bulb™** shows the level of purifying power. Your **TATA Swach® Bulb™** also has an Auto-shut Mechanism which is designed to automatically shut off water flow as soon as the purifying power is over. The **TATA Swach® Bulb™** is designed to purify up to 3000 litres of water, but its life may vary depending on the quality of input water.



The red indicator has reached bottom. Time to replace it with a new **TATA Swach® Bulb™**

It is important to note that as soon as the Red Life Indicator reaches its lowermost point, you should change the **TATA Swach® Bulb™**, regardless of whether or not the water flow stops.

The **TATA Swach® Fuse™** is an additional indicative safety feature to indicate purifying power of the **TATA Swach® Bulb™**. In case the **TATA Swach® Bulb™**

passes upto 3000 liters or has 6 months of normal usage, whichever is earlier, irrespective of the status of the **TATA Swach® Fuse™**, please change the **TATA Swach® Bulb™**.

## c) Mesh3

At the bottom of the **TATA Swach® Bulb™** lies the **Mesh3** a unique detachable component with micro mesh. **Mesh3** ensures that the **TATA Swach® Bulb™** continues to deliver clear & pure water, even when subjected to very high levels of dirty water.

The **TATA Swach® Bulb™** is made of unbreakable food grade plastic. However, care should be taken to ensure that it is never dropped from a considerable height (of more than 2 feet), tilted, shaken or smashed against a hard surface. If done, it may not harm the outer container but may cause damage to the system inside.

## How to assemble your TATA Swach® Nanotech Water Purifier™

### TATA Swach® Components:

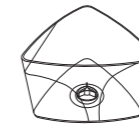
Your **TATA Swach®** Nanotech Water Purifier™ comes in a disassembled format.



Lower Container



Base



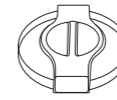
Upper Container (with adaptor)



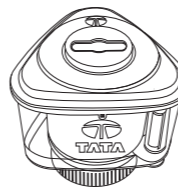
Mesh1



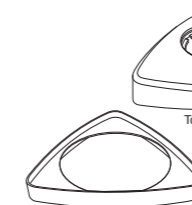
Mesh2



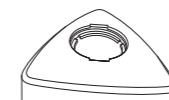
Top Cap



TATA Swach® Bulb™ (with Mesh3 attached)



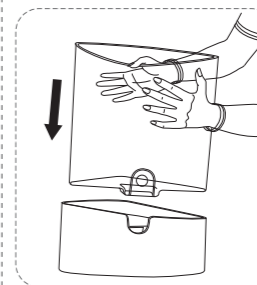
Spacer



Top Lid



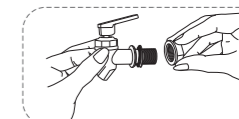
Tap



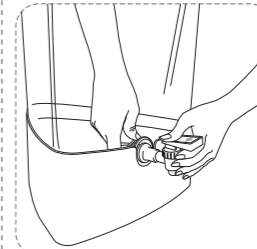
**Step 1:**  
Place the lower container on the base.



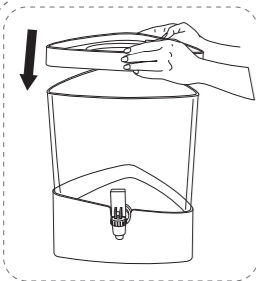
**Step 2a**



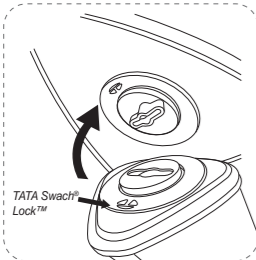
**Step 2b:** Fix the tap with washers.



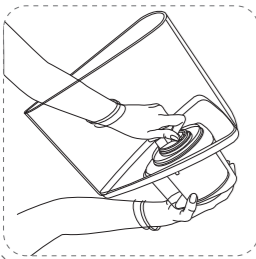
**Step 2c:**  
Fit the tap in the slot in the lower container.



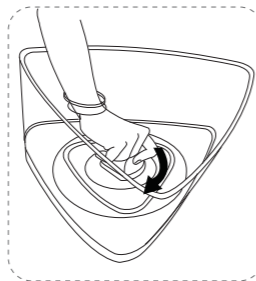
**Step 3:**  
Place the spacer on top of the lower container.



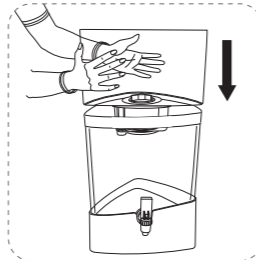
**Step 4a:**  
Ensure that the **TATA Swachh Lock™** in the **TATA Swachh Bulb™** fits the groove in the upper container.



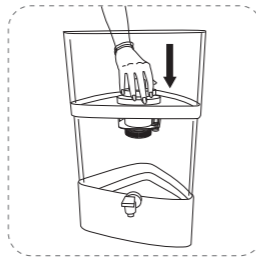
**Step 4b:**  
Now take the upper container and place the **TATA Swachh Bulb™** in the slot provided.



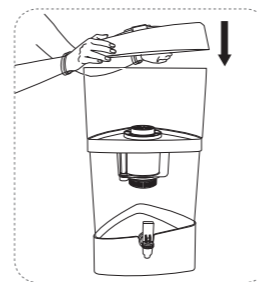
**Step 4c:**  
Turn the adaptor in a single 90 degree twist to firmly fix the **TATA Swachh Bulb™**.



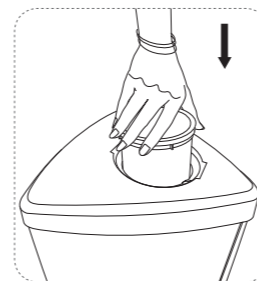
**Step 5:**  
Place the upper container on the spacer.



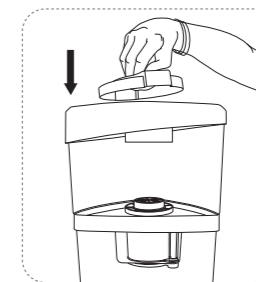
**Step 6:**  
Place **Mesh2** inside the upper container. Push firmly and rotate.



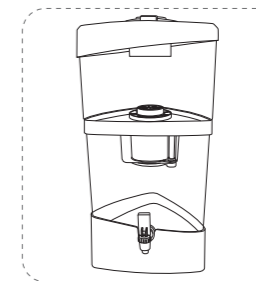
**Step 7:**  
Place the top lid on the upper container.



**Step 8:**  
Insert **Mesh1** in the slot provided in the top lid.



**Step 9:**  
Cover the top lid with the top cap and fix it.



**Step 10:**  
Follow post assembly instructions before use.

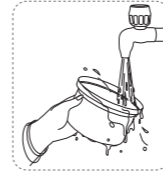
## Post assembly - before regular usage

After you have assembled your **TATA Swach**<sup>®</sup> Nanotech Water Purifier™, fill the upper container with water. In about 2-3 hours, the entire water would have passed from upper to lower container through the **TATA Swach**<sup>®</sup> **Bulb**™. Empty out all the water from the lower container. Your **TATA Swach**<sup>®</sup> Nanotech Water Purifier™ is now ready for use.

## Water Level Indicator

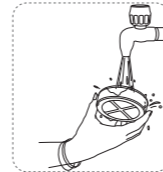
- To avoid overflow your **TATA Swach**<sup>®</sup> Nanotech Water Purifier™ comes with a water level indicator.
- The water level indicator on the purifier indicates the quantity of water that can be filled at a particular time into the upper container depending on the amount of water present in the lower container.
- If lower container has water till a particular level, fill water up to the same level in the upper container. This will help avoid overflow.  
For example: If the level of water is up to the red level of the lower container, then fill water up to the same red level in the upper container.

## Cleaning instructions



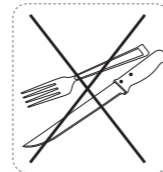
### A) **Mesh1 and Mesh2** :

- Clean the **Mesh1** and **Mesh2** at least once a week or as often as necessary.  
To clean, simply hold them under running water. You may use a brush or a soft fabric to clean.
- Do not use any sharp edged tools like knives, spoons, forks, etc.
- Do not use hot water.
- **Mesh1** and **Mesh2** may change color with use over time, due to quality of input water. However, change in color does not impact their ability to remove the minutest visible impurities in water.



### B) **TATA Swach**<sup>®</sup> **Bulb**™:

- Do not use any sharp edged tools like knives, spoons, forks, etc to clean any component of **TATA Swach**<sup>®</sup> **Bulb**™.
- After cleaning fit the **Mesh3** back to the **TATA Swach**<sup>®</sup> **Bulb**™ by simply pushing it back.
- **Imp**: Do not use the **TATA Swach**<sup>®</sup> **Bulb**™ without "**Mesh3**".



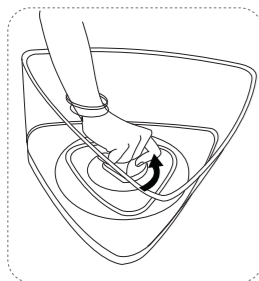
In case, **Mesh1 or Mesh2** get too dirty, you may replace them. For replacement, visit your nearest **TATA Swach**<sup>®</sup> outlet or call **TATA Swach**<sup>®</sup> Toll Free Helpline 1800-2-585858



## Replacing **TATA Swach® Bulb™**

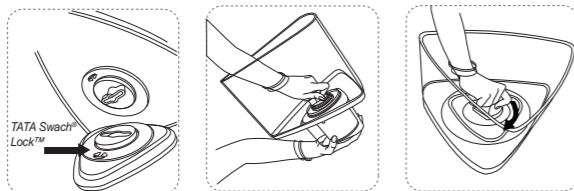
Once your **TATA Swach® Bulb™** purifies approximately 3000 litres of water, the **TATA Swach® Fuse™** will stop the water flow. This indicates that it is now time to change the **TATA Swach® Bulb™**.

Changing your **TATA Swach® Bulb™** is as simple as changing a light-bulb. Simply follow the steps below:-



Unlock old **TATA Swach® Bulb™**

1. Remove upper storage container and empty out any remaining water.
2. Hold **TATA Swach® Bulb™** with one hand and turn the adaptor 90 degree in anti-clockwise direction with the other hand (as in the diagram). **TATA Swach® Bulb™** is unlocked. Pull it outwards gently.
3. Now take the new **TATA Swach® Bulb™** and fit it to the upper container (for instructions refer page 8 - steps 4a, 4b, 4c).



Steps to replace the new **TATA Swach® Bulb™**

## Important

- It is advisable to have a spare **TATA Swach® Bulb™** at home at all times.
- Further, it is recommended that you also replace your **Mesh1** and **Mesh2** every time you change the **TATA Swach® Bulb™**. This will help maximize the life of the new **TATA Swach® Bulb™**.

## Technical Specifications of your **TATA Swach® Nanotech Water Purifier™**

### **TATA Swach® Nanotech Water Purifier™**

- Height: 572 mm
- Width: 300 mm
- Depth: 282 mm
- Weight: 3 kgs
- Capacity:
  - Upper Storage Container: up to 9 litres
  - Lower Storage Container: up to 9 litres
- Material of construction: Food grade, non-toxic, engineering plastic.

### **TATA Swach® Bulb™**

- Height: 111 mm
- Width: 146 mm
- Depth: 138 mm
- Weight: 0.6 kg
- Material of construction: Food grade, non toxic, engineering plastic
- Expected Life: up to 3000 litres



## Most often asked questions

### Q1) What is the capacity of my **TATA Swach**<sup>®</sup> Nanotech Water Purifier™?

A) Both the upper storage container and lower storage container have a maximum capacity of 9+9 litres each.

### Q2) How much water can the **TATA Swach**<sup>®</sup> **Bulb**™ purify?

A) The **TATA Swach**<sup>®</sup> is designed to give up to 3000 litres of purified drinking water at normal room temperature and in moderate humidity conditions and subject to normal municipal water or drinkable water from wells and borewells.

### Q3) How long does it take the water to get purified?

A) **TATA Swach**<sup>®</sup> Nanotech Water Purifier™ purifies up to 3 to 4 litres of drinking water per hour. However, the rate could be lesser or higher depending on the quality of the input water.

### Q4) What if the water does not flow out of **TATA Swach**<sup>®</sup> **Bulb**™?

A) In case the drinking water coming out of the **TATA Swach**<sup>®</sup> **Bulb**™ slows down or completely stops, follow the steps below :

- Tap **TATA Swach**<sup>®</sup> **Bulb**™ purifier machine gently on the sides to remove any air-lock.
- If water still does not flow, clean the **Mesh2** by holding it under running water. If the water flow does not increase, follow the next step.
- Remove **Mesh3** from the bottom of **TATA Swach**<sup>®</sup> **Bulb**™ and clean it by holding under running water. In case the water flow still does not increase, then follow the next step.
- Remove **TATA Swach**<sup>®</sup> **Bulb**™ from the **TATA Swach**<sup>®</sup> Nanotech Water Purifier™ and gently upturn it once.
  - If the water still doesn't flow, immerse the **TATA Swach**<sup>®</sup> **Bulb**™ in a bucket of water and allow air to escape.
  - If still the water flow does not improve, call the **TATA Swach**<sup>®</sup> Toll Free Helpline 1800-2-585858 or visit your nearest **TATA Swach**<sup>®</sup> Nanotech Water Purifier™ retail outlet.

### Q5) What if there is a breakage accidentally?

A) In case there is a breakage of any component, please call up the **TATA Swach**<sup>®</sup> Toll Free Helpline 1800-2-585858. They will advise you on the nearest **TATA Swach**<sup>®</sup> outlet. You can easily approach the service point and get a fresh component. However, since the plastic components are not covered under warranty, the replacement/s would be chargeable.

### Q6) Can **TATA Swach**<sup>®</sup> Nanotech Water Purifier™ purify brackish/salty water?

A) **TATA Swach**<sup>®</sup> Nanotech Water Purifier™ can make water free from harmful bacteria and virus. However, it does not remove dissolved solids or brackishness / saltiness from water. In case you put brackish water into your **TATA Swach**<sup>®</sup> Nanotech Water Purifier, the output water would be microbially safe, but there will be no change in taste. It may be noted that putting salty water consistently in the **TATA Swach**<sup>®</sup> Nanotech Water Purifier™ may cause the **TATA Swach**<sup>®</sup> **Bulb**™ to choke before it's designated end-of-life.

### Q7) Where can I buy a replacement **TATA Swach**<sup>®</sup> **Bulb**™?

A) The **TATA Swach**<sup>®</sup> **Bulb**™ is widely available across many outlets. Please visit the nearest **TATA Swach**<sup>®</sup> Nanotech Water Purifier™ retailer or the shop from where you had purchased your **TATA Swach**<sup>®</sup>. Please call **TATA Swach**<sup>®</sup> Toll Free Helpline 1800-2-585858. It is advisable to have a spare **TATA Swach**<sup>®</sup> **Bulb**™ at home at all times. The replacement unit contains one unit of **TATA Swach**<sup>®</sup> **Bulb**™ along with **Mesh3**.

## TATA Swach® Warranty Principles:

Tata Chemicals Limited (TCL) warrants as under for this Water Purifier bought to be free from workmanship and material defects under normal usage conditions:-

1. The warranty period starts from the date of purchase by the first end user and shall be valid for a period of one (1) year from the date of purchase by first end user.
2. TCL or its Authorized Service Provider/ Dealer (ASP/D) will replace or repair the Water Purifier for causes that in the opinion of TCL or its ASP/D were due to faulty material or workmanship, with the exception of consumable items such as the **TATA Swach® Bulb™, Mesh1, Mesh2 and Mesh3**.
3. TCL's obligation under this warranty shall be limited to repairing or providing replacement of parts which according to TCL are found to be defective. TCL or its ASP/D will be entitled to retain any defective part/s replaced under this warranty.
4. Please handle the Water Purifier with care to guard against breakage. The plastic body of the Water Purifier, the plastic components of the **TATA Swach® Bulb™** and the entire Water Purifier as such are not covered under this warranty.
5. Notification of any defects noticed must be given promptly (not later than seven (7) days) to TCL or its ASP/D in writing or by calling the customer care no. Adequate opportunity would have to be given to TCL or its ASP/D to inspect/test and remedy the defects, for which, if required, the Water Purifier would have to be deposited in any city in which the Water Purifier is sold through a TCL ASP/D, along with the original invoice. Services under this warranty can be availed only at the said point of sale.
6. TCL's / ASP's/D's inspection and test report will be final and binding under this warranty to determine defects / repairs / alterations that may be required for carrying out or certifying the working of the Water Purifier thereafter.
7. TCL or its ASP/D shall not be held liable for greater than the cost of repair of the defects in the workmanship. Under no circumstances and in no event, shall TCL's liabilities under this warranty exceed the price paid by the customer for the Water Purifier. This warranty does not include any monetary compensation under any circumstances.
8. In case the warranty claims are made within the period of one (1) year of this warranty and repairs are conducted of any part of the Water Purifier, this warranty will thereafter continue and remain in force only for the remaining unexpired period.

9. TCL or its ASP/D will not under any circumstances, be held liable for:
  - a. sickness or illness due to consumption of drinking water from the Water Purifier sold hereunder; and/or
  - b. for any injuries or damages of any kind, direct, consequential, or contingent, to persons or property; and/or
  - c. for repair or alterations made without prior written approval; and/or
  - d. for products clogged by suspended matter, precipitates, or biological growth; and/or
  - e. for failure when the Water Purifier has not been properly maintained.

It is understood that TCL or its ASP/D does not have any control over the input liquid, maintenance and use of the Water Purifier to be made liable for any damages of any kinds.

10. This warranty excludes all claims made on the water purifier or any of its parts thereof that in the opinion of TCL or its ASP/D have been subjected to misuse, misapplication, negligence, alteration, accident or operations contrary to instructions provided in the user manual. This warranty does not include a service to diagnose a claimed malfunction in the unit.
11. TCL or its ASP/D shall not be held responsible in case of failure to fulfill obligations under this warranty due to the occurrence of Force Major conditions including but not limited to floods, earthquakes, transportation strikes, labour disputes, or any other conditions beyond the control of TCL or its authorized ASP/D.
12. This warranty is void if :-
  - a. any repair work is carried out by persons other than those of TCL or its ASP/D; and/or
  - b. the serial number at the bottom of the water purifier is tampered with; and/or
  - c. the claimer is not the original purchaser of the unit; and/or
  - d. the unit is not operated under normal municipal water or drinkable water from wells or borewells.
13. TCL reserves the right to make design and product changes, improve design or change specifications at any time without any contingent obligations to prospective buyers, or owners of products previously sold.
14. This warranty is issued in Mumbai and the courts of Mumbai shall have exclusive jurisdiction over matters covered or flowing from this warranty.